

MOUNTAIN VIEW POLICE DEPARTMENT

2010



*SETTING THE STANDARD
FOR
POLICE PROFESSIONALISM*

MOUNTAIN VIEW, CA 94041

ANNUAL REPORT

TABLE OF CONTENTS

MESSAGE FROM THE CHIEF	PAGE 1
STRATEGIC VISION.....	PAGE 2
BUDGETED POSITION SUMMARY	PAGE 3
ORGANIZATION CHART	PAGE 4
ADMINISTRATION DIVISION/OFFICE OF THE POLICE CHIEF	PAGE 5
FIELD OPERATIONS DIVISION.....	PAGE 10
SPECIAL OPERATIONS DIVISION.....	PAGE 15
ANNUAL STATISTICS AND ANALYSIS.....	PAGE 20
REPORTED CRIME — FIVE YEARS	PAGE 20
FIVE-CITY CRIME COMPARISON.....	PAGE 21
NON-CRIME REPORTS.....	PAGE 21
CLEARANCES AND ARRESTS.....	PAGE 22
TRAFFIC — FIVE YEARS.....	PAGE 23
GANG-RELATED CASES.....	PAGE 24
GLOSSARY AND CALCULATIONS.....	PAGE 25

MESSAGE FROM THE CHIEF



Police Chief Scott S. G. Vermeer

Thank you for taking the time to read the Mountain View Police Department's 2010 Annual Report.

This report is an overview of each division that makes up the Police Department and provides a snapshot of annual trends in crime and traffic, as well as provides information about other issues affecting our community relative to public safety.

One of my main focuses in 2010 was the merging of some units within the Police Department and the Mountain View Fire Department. In order to create efficiencies and provide a more robust service to our community, I merged many aspects of both departments' Office of the Chief. Administrative support staff now work together to provide their services to both departments. Emergency management, fiscal services, public information, crime prevention, fire prevention education and the volunteer corps were combined. My goal is to continue to provide exceptional service by combining forces where it makes sense to do so.

I am very proud of the men and women of this department and their dedication towards my vision of *setting the standard for police professionalism* and our goal of ensuring a total commitment to constantly reducing crime in Mountain View. Their efforts have paid off once again. Part I crimes and violent crimes were down from 2009's numbers and lower than the five-year average. In fact, Part I crimes were at a historic low.

Thank you for partnering with us to keep Mountain View safe and I hope you find the information contained in this report useful.

Scott S. G. Vermeer
Police Chief

STRATEGIC VISION

The Mountain View Police Department's strategic vision is to *set the standard for police professionalism*, defined as:

- Total commitment to constantly reducing crime.
- Taking all cases to an appropriate conclusion.
- Making all contacts respectful and effective.
- Ensuring a sense of safety on our roadways and in our community.
- Using our resources responsibly.
- Operating with policies and procedures that reflect the profession's best practices.
- Continuously developing and improving the skills and abilities of all department members.
- Having pride and recognizing accomplishments throughout the department.
- Holding ourselves accountable to be effective, to maintain the highest integrity and to make a difference in people's lives.

BUDGETED POSITION SUMMARY

POSITIONS	2010-11 ADOPTED
Police Chief/ Asst. City Manager of Public Safety	1
Police Captain	2
Police Support Services Manager	1
Police Lieutenant	5
Police Sergeant	17
Police Officer	67
Police Officer (Overhire)	3
Community Relations Officer	0.50*
Office of Emergency Services Coordinator	0.50*
Public Education Specialist	0.50*
Senior Systems Specialist	1**
Crime Analyst	1
Systems Specialist	1
Communications Operations Supervisor	1
Lead Public Safety Dispatcher	4
Public Safety Dispatcher	10.50
Police Records Supervisor	1
Lead Police Records Specialist	2
Police Records Specialist	10**
Community Services Officer	8
Property & Evidence Specialist	1
Police Assistant III	2.50**
Senior Administrative Analyst	1.50**
Executive Assistant	0.50*
Secretary	1*
Office Assistant III	1
Total Permanent	144.50
Total Part-Time Hourly	3.60^
TOTAL POSITIONS	148.10^^

*Transferred 0.5 Community Relations Officer, 0.5 Executive Assistant and one Secretary positions to the Fire Department and transferred 0.5 Office of Emergency Services Coordinator and 0.5 Public Education Specialist positions from the Fire Department.

**Unfunded the Senior System Specialist, 0.5 Senior Administrative Analyst, one Police Records Specialist and 1.5 Police Assistant III positions.

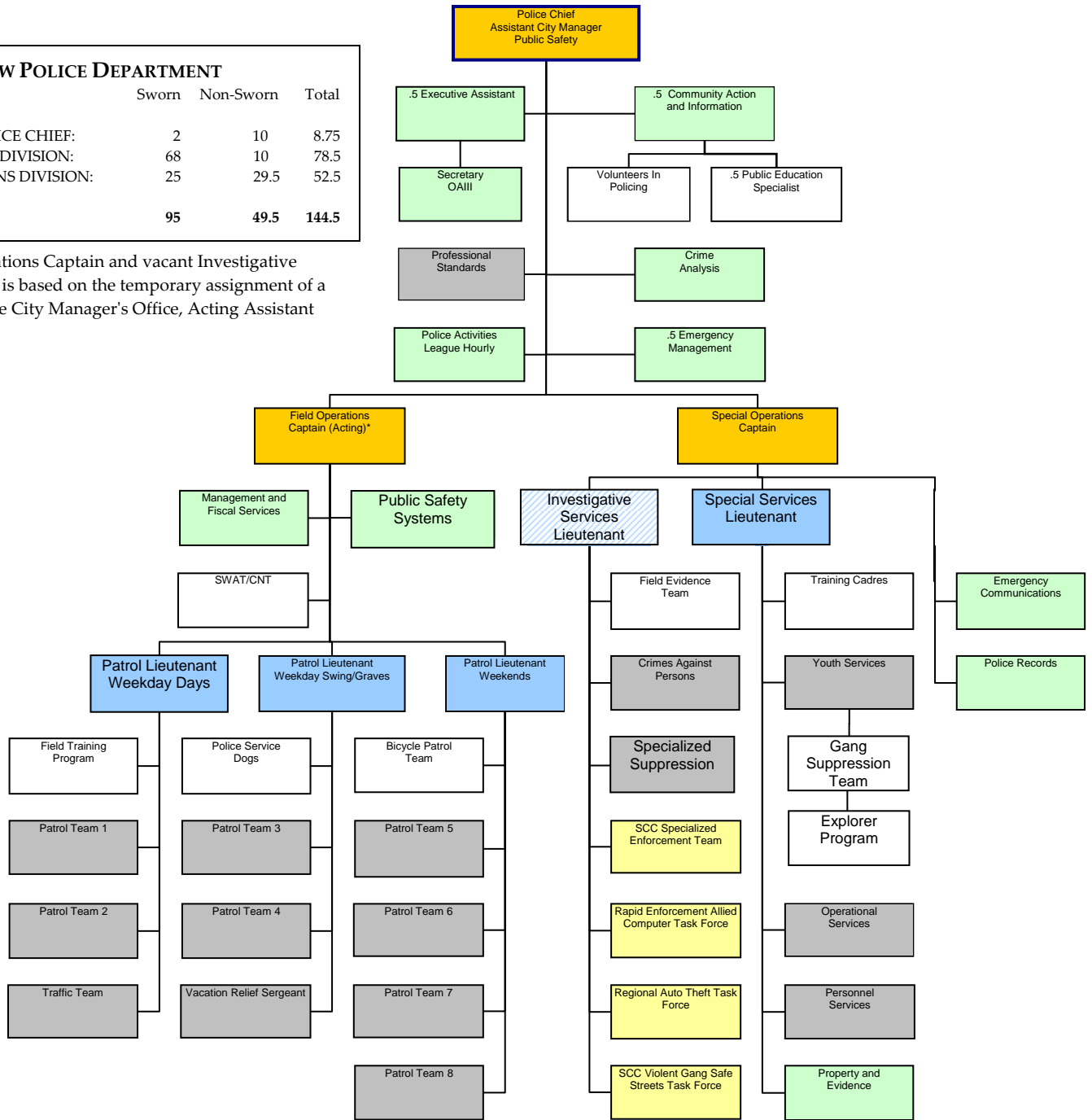
^Reduced hours for the PAL program, added hours to supplement Police Assistant duties.

^^In addition, there is a limited-period Public Safety Dispatcher position.

2010 ORGANIZATION CHART

MOUNTAIN VIEW POLICE DEPARTMENT			
	Sworn	Non-Sworn	Total
OFFICE OF THE POLICE CHIEF:	2	10	8.75
FIELD OPERATIONS DIVISION:	68	10	78.5
SPECIAL OPERATIONS DIVISION:	25	29.5	52.5
TOTAL:	95	49.5	144.5

*Acting Field Operations Captain and vacant Investigative Services Lieutenant is based on the temporary assignment of a Police Captain to the City Manager's Office, Acting Assistant City Manager.



ADMINISTRATION DIVISION/OFFICE OF THE POLICE CHIEF

DESCRIPTION

The Administration Division is responsible for managing the Police Department and certain aspects of the Fire Department and includes the Office of the Chief.

2010-11 Fiscal Year Budget: \$1,621,100

FUNCTIONS

- Maintain the integrity of the department and investigate all complaints against Police employees.
- Track all major community policing actions.
- Provide administrative support to Police and Fire Departments.
- Coordinate and implement all crime prevention and crime analysis activities.
- Relay public information by maintaining open communications and relationships with local media personnel.
- Coordinate emergency preparedness and response.

DIVISION UNITS AND PERSONNEL

LEADERSHIP

Police Chief	Scott S. G. Vermeer
Deputy Police Chief (Interim)*	Max Bosel
Executive Assistant	Melia Pierceall**
Executive Assistant (Acting)**	Chandra Kooner

ADMINISTRATIVE SUPPORT

Secretary	Carmen Young
Secretary**	Chandra Kooner
Office Assistant III	Anna Kuhn
Office Assistant III	Champika Valencia
Analyst—Hourly**	Erik Davis

COMMUNITY ACTION AND INFORMATION

Community Relations Manager	Liz Wylie
Public Education Specialist	Jaime Garrett
Community Service Officer**	Steve McCoy
Police Assistant—Part-Time	Jennifer Crist

CRIME ANALYSIS

Crime Analyst	Sherry Montalban
Police Assistant—Permanent**	Sue Barcelona

PROFESSIONAL STANDARDS

Special Investigations Sergeant**	Keith Plamondon
Special Investigations Sergeant**	Jessica Nowaski
Special Investigations Lieutenant**	Chris Hsiung

EMERGENCY MANAGEMENT

OES Coordinator	Lynn Brown
-----------------	------------

POLICE ACTIVITIES LEAGUE

Police Assistant—Hourly**	Travis Martin
Police Assistant—Hourly**	Alyssa Hamlin

*An interim Deputy Police Chief position was created in 2009 to provide day-to-day supervision as Chief Vermeer continued his role as the Interim Fire Chief. The position was eliminated in 2010 when Chief Vermeer ended his term as the Interim Fire Chief.

**Employee worked in this position for a portion of the year.

ADMINISTRATION DIVISION/OFFICE OF THE POLICE CHIEF — CONTINUED

COMMUNITY ACTION AND INFORMATION UNIT

The Community Action and Information Unit is comprised of crime prevention efforts, media relations and community outreach. Programs include Neighborhood and Business Watch, the False Alarm Abatement Program, Volunteers in Policing and special events.

FALSE ALARM ABATEMENT PROGRAM

Total False Alarms	False Alarm Fines Revenue	Permit Fees Revenue
2,036	\$111,388	\$56,256

VOLUNTEERS IN POLICING/EXPLORER POST

Program	Volunteered Hours	Full-Time Equivalent	Number of Events Attended
Volunteers in Policing	1,259	1.34	20
Explorer Post	1,526		

CRIME PREVENTION EFFORTS

Twitter Followers*	e-Notify Subscribers*	Neighborhood/ Business Watches	Watches Added	Watch Meetings Attended	Community Meetings/Presentations
2,695	272	139	4	6	6

*Twitter followers and e-Notify subscribers receive crime prevention information in addition to press releases and other MVPD-related information.

TOTAL PRESS RELEASES: 19

January 18, 2010:	"Four Arrested for Armed Robbery: Assault Handgun Recovered"
January 31, 2010:	"Armed Robbery Occurred; One Suspect in Custody"
February 1, 2010:	"Two Additional Robbery Suspects Arrested in Connection with 7-Eleven Robbery"
February 3, 2010:	"Sexual Assault Occurred; Sketch Released"
February 22, 2010:	"One Dies in Fatal Car Crash on Middlefield Road"
March 11, 2010:	"Mountain View Police Department Alcohol and Tobacco Decoy Operation"
April 1, 2010:	"A Suspect is in Custody After Robbing and Injuring a 74-Year-Old Man"
May 14, 2010:	"Two People Found Dead Inside Dry Cleaning Business"
May 26, 2010:	"Palo Alto Humane Society and Mountain View PD Work Together to Identify Shooter of Cat"
June 1, 2010:	"Buckle Up Day and Night"
July 20, 2010:	"Fatal Hit-and-Run Traffic Collision; Suspect Arrested"
July 30, 2010:	"Fourth Annual 'Kick, Lead and Dream' Soccer Camp Leads to Year-Round Programs for At-Risk Kids and Teenage Volunteers"
September 14, 2010:	"Home Invasion Robbery"
November 1, 2010:	"Fatal Collision on El Camino Real; Suspect Arrested for Vehicular Manslaughter"
November 4, 2010:	"Mountain View Police are Looking for a Suspect Accused of Attempting to Assault an Officer"
November 23, 2010:	"Mountain View PD Partners with Creation Technologies to Provide Thanksgiving Lunch to Students"
December 1, 2010:	"MVPD Announces the 8th Annual 'Cops That Care' Holiday Gift-Giving Program"
December 7, 2010:	"MVPD Searching for At-Risk Missing Man"
December 16, 2010:	"MVPD Seeks Help in Solving a Home Invasion Robbery Case"

ADMINISTRATION DIVISION/OFFICE OF THE POLICE CHIEF — CONTINUED

CRIME ANALYSIS

The mission of the Crime Analysis Unit is to obtain and analyze reported crime and suspicious activity in order to identify crime patterns, trends and offenders; provide timely, accurate intelligence to the appropriate resources in order to reduce and solve crime; and provide statistical and analytical data regarding departmental operations.

PROFESSIONAL STANDARDS UNIT

INTERNAL INVESTIGATION COMPLAINTS

Sustained	Unfounded	Not Sustained	Exonerated	Pending	Total Reported
2	2	2	1	0	9

USE OF FORCE — REVIEW

In 2010, force was used on 50 separate individuals for a total of 54 uses of force (in some cases, more than one type of force was used on one person). In 2009, force was used on 39 individuals which equates to a 28 percent increase. Total arrests increased 3 percent in 2010 with 2,669 arrests (compared to 2,590 arrests in 2009). Reportable force was used in 1.9 percent of the 2,669 arrests. All incidents of force used were reviewed by the department's chain of command; none were found to be out of compliance.

Type of Force	Injury					Total
	None	Minor	Moderate	Major	Fatality	
Control Hold	0	1	0	0	0	1
Personal Weapon	3	4	0	0	0	7
Uncontrolled Takedown	13	20	0	0	0	33
OC (pepper spray)	0	0	0	0	0	0
Baton	0	0	0	0	0	0
CED*	2	5	0	0	0	7
K-9	0	0	2	0	0	2
Ramming	3	0	0	0	0	3
Carotid Restraint	0	1	0	0	0	1
Firearm	0	0	0	0	0	0
TOTAL	21	31	2	0	0	54

*CED, or Conductive Energy Device, is commonly referred to as a Taser.

INTERNAL AUDITS

Four internal audits were conducted in 2010. Areas audited included: fleet; public intoxication arrests; property and evidence; uses of force and CED-specific uses of force.

ADMINISTRATION DIVISION/OFFICE OF THE POLICE CHIEF — CONTINUED

PERSONNEL AND RECRUITMENT

REVIEW

Position	Applications	Eligible for Testing Process	Passed Oral Board	Background Checked	No. Hired
Police Officer (Lateral and Academy Graduates)	391	52	36	5	4
Reserve Officers	231	38	6	2	2
Public Safety Dispatchers	64	18	11	2	2

NEW HIRES

Police Officers Kristina Jacob
 Matthew Hom
 Rodshetta Smith
 Terry Hoang
 Reserve Police Officers Nicole Baggett
 Mark Lindsay
 Hourly Analyst Erik Davis
 Public Safety Dispatchers Christine Guevarra
 Deborah Miller
 Tammy Smith*
 Police Assistant (MVPAL) Alyssa Hamlin*
 Counselors Diana Ritter**
 Martha Zambrano**

Police Assistant Sue Barcelona

RESIGNATIONS AND SEPARATIONS

Police Officer Kristina Jacob
 Community Service Officer Dave Halford
 Lead Public Safety Disp. Tammy Smith
 Lead Public Safety Disp. Shawn Leaver
 Public Safety Dispatcher David Hayhurst
 Records Specialist Christine Guevarra
 Police Assistant (MVPAL) Travis Martin

PROMOTION

Sergeants Steve Kendig
 Frank St. Clair
 Dan Frohlich
 Tony Veyra
 Mike Fisher
 Lead Pub. Safety Dispatcher Allison Taylor
 Public Safety Dispatcher II Dina Holton

RETIREES

Sergeant Allen Sakaguchi
 Officers Alan Nelson
 Michael Mooney
 Records Specialist Mitzi Johnston

* Hourly employee

**Via contract with the Community Health Awareness Council (CHAC)

PERSONNEL STATISTICS (TOTAL HOURS)		
Workers' Compensation Leave		Sick Leave
Sworn	Nonsworn	
1,205	258	7,227
Full-Time Equivalent: .58	Full-Time Equivalent: .12	Full-Time Equivalent: 3.47

ADMINISTRATION DIVISION/OFFICE OF THE POLICE CHIEF — CONTINUED

MOUNTAIN VIEW POLICE ACTIVITIES LEAGUE (MVPAL)

Mission: Mountain View Police Activities League's mission is to foster mutual understanding between youth and Police Officers through a nonconfrontational setting and, in this way, divert them away from gangs and criminal activity. To accomplish this goal, MVPAL offers a wide variety of recreational and leadership opportunities to kids between the ages of 5 and 18.

President: Scott S. G. Vermeer.

Executive Director: Travis Martin (for a portion of the year)
Alyssa Hamlin (for a portion of the year)

Community Board of Directors: Oscar Garcia, Dr. Maurice Ghysels, Dr. Barry Groves, David Muela, Tom Wirth, Tim Byrd, Joanne Pasternack and Stephen Hitchcock.

Administrative Board of Directors: Scott S. G. Vermeer, Kenneth Leal, Fernando Maldonado, Jessica Nanez, Ron Cooper, Hung LeDang, Wahed Magee, Travis Martin and Kim Castro.

Mountain View's Police Activities League (PAL) fosters bonds of mutual trust and understanding between Police Officers and young people by interacting in nonconfrontational settings. PAL's mission is to divert youth away from gangs and crime by providing alternative, supervised activities, including educational, cultural and recreational events.

On Sept. 16, 2010, the MVPAL hosted its first fundraising dinner. The gala event, titled "A Celebration of MVPAL's Rock Stars", was held at the Shoreline Amphitheater and was attended by over 200 people. The event netted proceeds of over \$25,000 to further enhance our MVPAL programs and services.

The MVPAL served over 1851 members of our youth in 2010 through programs such as the mentoring program; Kick, Lead and Dream; NetGain Tennis; Camporee; PAL Boxing; and Paddle Day.

MAIN MVPAL PROGRAM ATTENDANCE

Mentoring	Kick, Lead and Dream	NetGain Tennis	Camporee	PAL Boxing	Paintball	Sharks Game	Cops that Care
30	225	40	20	50	15	12	1700+

FIELD OPERATIONS DIVISION

DESCRIPTION

The Field Operations Division is responsible for providing all uniform police services to the community.

2010-11 Fiscal Year Budget: \$16,430,333

FUNCTIONS

- Respond to criminal activity and calls for service in an effective and timely manner.
- Provide crime suppression and prevention activities.
- Coordinate the Field Training Officer Program and train all newly hired Police Officers and Reserve Officers in the field.
- Manage radio systems and public safety computer systems.
- Coordinate facility, budget, grants and other management tasks.

DIVISION UNITS AND PERSONNEL

LEADERSHIP

Captain	Max Bosel**
Captain (Acting)	Chris Hsiung**
Patrol Lieutenants	Ken Miller
	Derek Sousa
	Chris Hsiung**
	Jeff Sato**

PATROL*

Sergeants	Keith Plamondon
	Ted Rodgers
	Russ Barcelona**
	Dale Messimer
	Art Roberts
	Jessica Nowaski**
	Sean Thompson**
	Steve Kendig**
	Frank St. Clair**
	Dan Frohlich**
	Mike Fisher**

Agents

Tony Vieyra**
Cary Shueh
Steve Kendig**
Frank St. Clair**
Dan Frohlich**
Sean Thompson**

*For a full list of patrol officers and CSOs, see Page 12.

**Employee worked in this position for a portion of the year.

TRAFFIC UNIT

Sergeant	Bryan Albarillo
Officers	Steve Mello
	Ed Hammon
	Lloyd Curns
Community Services Officer	Mary Flores
Police Assistant—Hourly	Fremont Nash
Police Assistant—Hourly	Jonathan Moyle

FIELD OPERATIONS DIVISION—CONTINUED

CRITICAL INCIDENT OPERATIONS GROUP

SWAT Team

Tactical Commanders	Chris Hsiung Russ Barcelona
Team Members	Greg Oselinsky Dan Vicencio Ruben Gonzalez Scott Thomas Mike Canfield Pete Beninger Darryl DeFiore** Frank Rivas** Tim Minor Wahed Magee Ty Zemlok
Tactical Dispatchers	Annie Lohman Tammy Smith Jen Wandruff

Crisis Negotiation Team

Negotiators	Derek Sousa Mike Ecdao Ted Rodgers Steve Mello Jessica Nowaski Jeff Reed Saul Jaeger Jodie Pierce
-------------	--

CANINE PROGRAM

Lieutenant	Ken Miller
Sergeant	Dale Messimer
Canine Handlers	Scott Thomas Ricky Valenzuela Pablo Donato** Greg Sula**
Canines	Tino, Astor*, Oles, Nash

*Canine Astor retired in 2010.

PUBLIC SAFETY SYSTEMS

Senior Systems Specialist	Doug Kiner
Systems Specialist	Jeff Goss

MANAGEMENT AND FISCAL SERVICES

Senior Admin. Analyst	Duncan McKenzie
Administrative Analyst	Beverly Stenson

** Employee worked in this position for a portion of the year.

FIELD OPERATIONS DIVISION—CONTINUED

POLICE OFFICERS ASSIGNED TO FOD

Steve Mello
Alan Nelson*
Mike Mooney*
Mike Soqui
Dorene Hansen
Ron Cooper
Greg Sula
Lloyd Curns
Travis Doerres
Bobby Taylor
Eilaine Longshore**
Darryl DeFiore**
Mike Taber
Ricky Smith
Scott Thomas
Kathy Stahl
Jeff Reed**
Tom Renault
Mason Motomura
Mike Magaña
Pablo Donato
Tim Dahl
Ed Hammon
Frank Rivas
Katherine Comesana
Matt Ken
Chris Kikuchi
John Renegar
Titus Hammond
Tim Minor
Janleah Salve
Dan Garcia
Ricky Valenzuela

Jason St. Laurent
Jessica Nanez**
Fernando Maldonado
Curtis Lau
David Fisher
Wahed Magee
Kevin Galloway
Ranjan Singh
Kevin Nguyen
Mike Mielke
Andrew Wong
James Guevarra
Thomas Low
Ty Zemlok
Evan Crawl
Matt Atkins
Amro Sirhan
Alex Beraha
Marco Garcia
Glenn Gardner
David Dudley
Matthew Hom
Rodshetta Smith
Terry Hoang

COMMUNITY SERVICES OFFICERS ASSIGNED TO FOD

Brad Flores
Jodie Pierce
Mary Flores
Kala Thrower
Tim Loo**
Leslie Ota

* Retired in 2010

** Employee worked in this position for a portion of the year

FIELD OPERATIONS DIVISION — CONTINUED

CRITICAL INCIDENT OPERATIONS GROUP

The Mountain View Critical Incident Operations Group (CIOG) is made up of the SWAT Team and the Crisis Negotiation Team. The CIOG attends regular trainings and assists Patrol and Investigative Services in carrying out warrant services, arrests, barricaded subjects, hostage negotiations and other high-risk activity. In 2010, the CIOG was called out on three occasions for high-risk cases, was asked to provide mutual aid support for two large-scale events and attended numerous trainings totaling over 200 hours.

Activations Involving Mountain View or Mountain View Cases:

April 16, 2010: A suspect wanted for attempted murder on two East Palo Alto police officers barricaded himself in a residence on Calderon Ave. with his girlfriend and her aunt and uncle. The CIOG responded to assist the Department of Justice and East Palo Alto Police Department. Crisis negotiators contacted the three uninvolved subjects and safely removed them from the home. They then successfully negotiated the surrender of the suspect who was taken into custody without further incident.

June 15, 2010: The Mountain View Police Department-based FBI Safe Street's Task Force had been investigating a murder for hire case involving multiple gang members. The SWAT team was activated on June 15th to conduct active surveillance on many of the involved subjects. When the suspects converged at a cemetery in San Jose, the SWAT team safely took all of them into custody without incident.

Dec. 4, 2010: A family fled their home when their relative became suicidal and put a gun to his head. The CIOG was activated and crisis negotiators attempted to make contact with the man, who was last seen in the garage. After numerous attempts to contact him failed, the SWAT team sent two borrowed robots into the garage. The robots were able to confirm that the man had already killed himself.

CANINE PROGRAM

The Canine Program is comprised of three Police Officers and three police service dogs who work graveyard shift seven days per week. The Police Officers and their dogs train regularly, including four hours every week. The dogs are proficient in searching for people, apprehending suspects and locating evidence and narcotics.

CANINE PROGRAM REVIEW — 2010

Training Hours	853
Deployments	182
Evidence/Article Finds	5
Suspect Locates/Apprehensions	17
Outside Agency Assists	20
Narcotics Finds	13

FIELD OPERATIONS DIVISION — CONTINUED

TRAFFIC UNIT

The Traffic Unit is responsible for maintaining traffic safety throughout the City through enforcement and education. The Officers patrol the streets on motorcycles and investigate traffic collisions.

TRAFFIC CITATIONS AND ACCIDENTS

VIOLATION	2010	2009	CHANGE
SPEEDING	650	1,031	-37%
FOLLOWING TOO CLOSELY	11	26	-58%
STARTING, BACKING, UNSAFELY	14	24	-42%
STOP SIGN — DISREGARD	912	1,412	-35%
REGULATORY SIGN — DISREGARD	1,019	594	72%
SIGNAL — DISREGARD	894	965	-7%
ROADWAY — FAILURE TO DRIVE ON RIGHT	99	177	-44%
TURNING UNSAFELY OR IMPROPERLY	134	113	19%
FAILURE TO YIELD AT INTERSECTION	117	130	-10%
FAILURE TO YIELD NOT AT INTERSECTION	38	35	9%
PASSING — UNSAFELY OR IMPROPERLY	5	16	-69%
OTHER MOVING VIOLATIONS	859	730	18%
TOTAL — MOVING VIOLATIONS	4,752	5,253	-10%
EQUIPMENT — UNSAFE	1,989	2,281	-13%
CHILD RESTRAINT VIOLATION	18	25	-28%
SEAT BELT VIOLATION	496	394	26%
WIRELESS DEVICE VIOLATION	2,467	2,190	13%
VEHICLE REGISTRATION	1,691	2,021	-16%
DRIVER'S LICENSE VIOLATION	1,106	1,503	-26%
FINANCIAL RESPONSIBILITY	1,228	1,480	-17%
TOTAL — NONMOVING VIOLATIONS	8,995	9,894	-9%
BICYCLE VIOLATION	42	13	223%
PEDESTRIAN VIOLATION	12	20	-40%
TOTAL — PEDESTRIAN/BICYCLE VIOLATIONS	54	33	64%
PARKING — UNSAFE OR IMPROPER	4,755	4,320	10%
PARKING — TIME LIMIT	2,199	1,420	55%
TOTAL PARKING VIOLATIONS	6,954	5,740	21%
TOTAL VIOLATIONS	20,755	20,920	-1%
COLLISIONS			
FATAL ACCIDENTS [NO. FATALITIES = 3]	3	0	100%
INJURY ACCIDENTS	196	203	-3%
PROPERTY DAMAGE REPORTS [PATROL REPSONSE]	181	326	-44%
CITIZEN (COUNTER) REPORTS	146	162	-10%
PRIVATE PROPERTY ACCIDENTS	46	59	-22%
TOTAL ACCIDENTS	572	750	-24%

SPECIAL OPERATIONS DIVISION

MISSION

The Special Operations Division is responsible for reducing and solving crime through prevention, intervention, investigation and suppression activities; supporting patrol; providing Police services for schools and special events; coordination of personnel and functions; coordinating victim services and providing technical support services.

2010-11 Fiscal Year Budget: \$10,521,160

FUNCTIONS

- Support Field Operations by providing resources for follow-up investigations of crime and unusual incidents.
- Provide services for youth through school resources, juvenile diversion and gang suppression activities.
- Manage special events, training, permits and reserve officers.
- Provide for the collection and safekeeping of property and evidence taken into department custody.
- Answer all 9-1-1 and nonemergency calls for public safety.
- Determine and dispatch the most appropriate response of Police, Fire or ambulance services.
- Record-keeping activities such as filing, indexing and collection of records and statistical information.
- Process arrest warrants.

DIVISION PERSONNEL

LEADERSHIP

Deputy Police Chief (Interim)*	Max Bosel
Captain**	Mick Hamlin

INVESTIGATIVE SERVICES

Lieutenant**	Jeffrey Sato
Acting Lieutenant**	Greg Oselinsky
Detective Sergeants	Ken Leal

	Pete De La Ossa
Task Force Sergeant	Dan Vicencio
Personnel Services Sergeant**	Allen Sakaguchi
Personnel Services Sergeant**	Sean Thompson

Detectives	Hung LeDang
	Brian Egan
	Armando Espitia
	Kevin Solomon**
	Jessica Nanez**
	Jeff Reed**
	Darryl DeFiore**
	Eilaine Longshore**
	Dave Berger
	Marshall Norton
	Peter Beninger
	Mike Canfield
	Temo Gonzalez
	Chris Goff
	Saul Jaeger

Community Services Officer**	Dave Halford
------------------------------	--------------

Police Assistant	Lana Freidin
------------------	--------------

* The Deputy Police Chief position was assigned to the Office of the Police Chief and also ran the SOD for a portion of the year.

** Employee worked in this position for a portion of the year.

SPECIAL OPERATIONS DIVISION—CONTINUED

SPECIAL SERVICES SECTION

Lieutenant Tony Lopez

Operational Services Unit

Sergeant Greg Oselinsky
Records Specialist Arleen Ruiz**

Youth Services Unit

Sergeant Mike Ecdao
Gang Officer Mike Magaña
School Resource Officers Ron Cooper
Katherine Comesana
CHAC Counselors Diana Ritter
Ana Valle
Martha Zambrano

Property and Evidence

Technician Tim Downey
Police Assistant—Full-Time Jennifer Lee

Personnel Services

Sergeants Allen Sakaguchi**
Sean Thompson**

EMERGENCY COMMUNICATIONS CENTER***

Supervisor André Harrison
Lead Dispatchers Tammy Smith**
Annie Lohman
Jocelyn Santos
Allison Taylor**

RECORDS UNIT***

Supervisor Jenni Sudano
Lead Records Specialists Teresa Arroyo
Lisa Sarabia

** Employee worked in this position for a portion of the year.

***For a complete list of personnel assigned to these units, see Page 19.

SPECIAL OPERATIONS DIVISION — CONTINUED

INVESTIGATIVE SERVICES

UNITS:	PROGRAMS:
Crimes Against Persons (CAP) Specialized Suppression (SSU)*	FBI Safe Streets Task Force Santa Clara County Specialized Suppression Team (SCCSET) Rapid Enforcement Allied Computer Task Force (RATTF) Regional Auto Theft Task Force (REACT) Field Evidence Team (FET)

*SSU includes property and financial crimes detectives.

UNIT STAFFING

	Authorized	Assigned
CAP	5.5	5.5
SSU	8.0	8.0
FBI Safe Streets TF	2.0	2.0
SCCSET	1.0	1.0
REACT	1.0	1.0
RATTF	1.0	1.0
Total	18.5	18.5

SEX OFFENDER REGISTRANTS*

	2010	2009
Total Number	76	83
Total Violations	0	2

UNIT OVERVIEW

CAP		PFC		SSU		Cleared by Arrest	Cleared by Exception
Cases	221	Cases	265	Cases	184		
Closed	147	Closed	205	Closed	156		

SPECIAL OPERATIONS DIVISION — CONTINUED

SPECIAL SERVICES

YOUTH SERVICES UNIT

The Youth Services Unit, led by a sergeant, is comprised of a gang officer, school resource officers, the Gang Suppression Team and counselors from the Community Health Awareness Council (CHAC). The main program offered by the unit is Functional Family Therapy (FFT), which is an Evidence-Based Program (EBP) designed as family intervention for dysfunctional youth ages 11 to 18. The FFT program is offered to at-risk youth and their families in Mountain View and Los Altos. By design, it provides support and therapy to reduce risky behavior, help families develop a "road map" for change, and instill trust and hope for the families in developing successful and healthy relationships.

The unit received 31 referrals of at-risk youth for the FFT program. These youths received direct services from the YSU staff and/or referrals to outside agencies and services.

OPERATIONAL SERVICES UNIT

The Operational Services unit was staffed for a portion of the year with a sergeant and a records specialist. The records specialist position was eliminated from the unit mid-year. The unit's primary responsibilities include running the Reserve Officer program and coordinating staffing for special events, such as Shoreline Amphitheater concerts, private hire events and downtown fairs and festivals.

Shoreline Concerts/Total Attendance	27/378,030
Private Hire Events/Officer Hours	61/773
Special Events/Officer Hours	28/942.5
Reserve Officers/Hours	20/7,823.5
Mobile Command Vehicle Deployments	6

PROPERTY AND EVIDENCE UNIT

The Property and Evidence Unit is staffed by a Property and Evidence specialist and a full time police assistant. The unit catalogs and maintains all evidence items. In addition, the unit coordinates evidence requests with the District Attorney's Office for cases progressing through the court process.

Items Processed/Handled	8,644
Items Booked	6,017
Guns	
Safekeeping	21
Evidence	30
Found	3
Destruction	17
Total	71

SPECIAL OPERATIONS DIVISION — CONTINUED

POLICE RECORDS AND EMERGENCY COMMUNICATIONS

INCOMING TELEPHONE CALLS HANDLED BY EMERGENCY COMMUNICATIONS

Via Non-Emergency Number	Via 911 or Emergency Landline	Total
55,160	30,880	86,040

COMPUTER-AIDED DISPATCH (CAD) INCIDENTS GENERATED

Police	Fire	Public Works	Mid-Peninsula	Total
80,001	5,139	800	3,231	89,171

RECORDS RECAP — DATA ENTERED

Reports	Citations*	Field Interviews	CLETS Transactions	Warrants
8,915	11,694	1,588	3,986	1,156

*Includes all types of citations

PUBLIC SAFETY DISPATCHERS — BY SENIORITY

1. Kevin Hobbs
2. Jen Wandruff
3. Judy Cahill
4. Justine Bruce
5. Sarah te Nyenhuis
6. Victoria Sanchez
7. Jaymie Caoili
8. Monique Dumlao
9. Graham Dittman
10. Dina Holton
11. Deborah Miller
12. Christine Guevarra

RECORDS SPECIALISTS — BY SENIORITY

1. Mitzi Johnston
2. Norma Zambo
3. Arleen Ruiz
4. Dee Ahl
5. Margaret Ramos
6. Lesley Costa
7. Charles Caldwell
8. Jill Darer
9. Amber Sauer

HOURLY DISPATCHERS — BY SENIORITY

1. Tim Downey
2. Brian Van Den Broeke
3. Tammy Smith
4. Judy Maloney

ANNUAL STATISTICS

REPORTED CRIME – FIVE YEARS

CLASSIFICATION	2010	2009	2008	2007	2006	5-YEAR AVERAGE
PART I						
CRIMINAL HOMICIDE	1	0	6	1	0	2
FORCIBLE RAPE	4	14	7	8	10	9
ROBBERY	46	47	55	56	71	55
AGGRAVATED ASSAULT	117	119	221	173	219	170
BURGLARY [1]	177	253	233	157	271	218
LARCENY [2]	1,179	1,437	1,432	1,224	1,648	1,384
MOTOR VEHICLE THEFT	102	165	143	138	325	175
ARSON	7	3	7	12	23	10
PART I TOTAL	1,633	2,038	2,104	1,769	2,567	2,022

[1] BURGLARY INCLUDES:						
RESIDENTIAL	71	111	114	77	96	94
COMMERCIAL	106	142	119	80	175	124

[2] LARCENY INCLUDES:						
AUTO BURGLARY OVER \$400	140	161	133	131	157	144
AUTO BURGLARY UNDER \$400	186	296	273	242	381	276
THEFT OVER \$400	281	236	279	216	287	260
THEFT UNDER \$400	572	744	747	635	823	704

PART II						
SIMPLE ASSAULT	352	260	271	293	314	298
FORGERY	26	24	27	32	24	27
FRAUD	110	110	127	133	173	131
EMBEZZLEMENT	12	19	27	32	13	21
STOLEN PROPERTY – BUY/POSSESS/REC	26	31	31	35	43	33
VANDALISM	315	435	402	332	372	371
WEAPON – CARRY/POSSESS	48	44	34	47	42	43
PROSTITUTION/VICE	3	2	7	5	8	5
SEX OFFENSE	38	31	38	35	34	35
DRUG ABUSE	516	425	404	508	331	437
OFFENSE AGAINST FAMILY AND CHILD	29	18	25	31	37	28
DUI	308	333	272	283	338	307
LIQUOR LAWS	36	8	13	36	29	24
PUBLIC INTOXICATION	313	257	203	304	262	268
DISORDERLY CONDUCT	17	18	16	20	23	19
CITY ORDINANCE	451	465	507	498	636	511
OTHER OFFENSES	1,350	1,481	1,304	1,250	1,341	1,345
PART II TOTAL	3,950	3,961	3,708	3,874	4,020	3,903
GRAND TOTAL	5,583	5,999	5,812	5,643	6,587	5,925

SPECIAL CLASSIFICATIONS						
OFFICERS ASSAULTED	17	5	17	12	11	12
DOMESTIC VIOLENCE	170	100	185	183	197	167
BIAS CRIME	0	2	2	1	1	1
ANTI-REPRODUCTIVE RIGHTS CRIME	0	0	0	0	0	0

CRIME INDEXES (per 1,000 current year population)						
VIOLENT CRIME*	2.25	2.41	3.87	3.18	4.01	3.14
PROPERTY CRIME**	21.90	25.76	26.00	21.36	29.51	24.91

*Violent Crime Index includes Criminal Homicide, Forcible Rape, Aggravated Assault and Robbery.

**Property Crime Index includes Burglary, Larceny, Motor Vehicle Theft and Arson.

ANNUAL STATISTICS — CONTINUED

FIVE-CITY CRIME COMPARISON*

CITY	POPULATION	HOMICIDE	RAPE	ROBBERY	AGGRAVATED ASSAULT	BURGLARY	LARCENY	STOLEN VEHICLE	ARSON
MOUNTAIN VIEW	74,762	1	4	46	117	177	1,179	102	7
PALO ALTO	61,200	0	4	39	70	217	1,083	49	23
REDWOOD CITY	79,000	3	16	69	89	462	988	189	3
MILPITAS	70,817	0	9	53	513**	264	1,461	256	15
SANTA CLARA	111,106	2	7	62	79	481	2,210	327	0
SUNNYVALE	132,144	0	26	58	84	405	1,573	246	52

*Information provided by corresponding agencies.

**Includes simple and aggravated assault.

NON-CRIME REPORTS

CLASSIFICATION	2010	2009	% CHANGE
ACCIDENTS: NONVEHICULAR	45	36	25%
COURTESY REPORT	157	98	60%
DEATH, CORONER/NONCORONER	51	49	4%
DISTURBANCE	26	26	0%
DOMESTIC DISTURBANCE	63	46	37%
INCONCLUSIVE CHILD ABUSE	6	12	-50%
MISSING PERSON ADULT	40	33	21%
MISSING PERSON JUVENILE	55	67	-18%
PROPERTY FOUND	340	292	16%
PROPERTY LOST	317	312	2%
PROPERTY RECOVERED	0	0	0%
PSYCHOLOGICAL COMMITMENT	165	138	20%
RESTRAINING ORDER SERVICE ^[1]	36	32	13%
SERVICE MISCELLANEOUS	414	337	23%
SUICIDE/SUICIDE ATTEMPTED	22	26	-15%
SUSPICIOUS CIRCUMSTANCES	301	185	63%
WARRANT ARREST/AFOJ	546	463	18%
TOTAL	2,584	2,152	20%

^[1] Includes Front Counter Temporary Restraining Order Notification.

ANNUAL STATISTICS — CONTINUED

2010 CLEARANCES AND ARRESTS

REPORTED AND CLEARED	2010	% Cleared	2009	% Cleared	% Change
PART I					
CRIMINAL HOMICIDE	1	100%	0	100%	0%
FORCIBLE RAPE	3	75%	7	50%	25%
ROBBERY	17	37%	21	45%	-8%
AGGRAVATED ASSAULT	72	62%	81	68%	-7%
BURGLARY [1]	30	17%	28	11%	6%
LARCENY [2]	265	22%	342	24%	-1%
MOTOR VEHICLE THEFT	11	11%	26	16%	-5%
ARSON	4	57%	1	33%	24%
PART I TOTAL	403	25%	506	25%	0%

[1] BURGLARY INCLUDES:					
RESIDENTIAL	16	23%	15	14%	9%
COMMERCIAL	14	13%	13	9%	4%

[2] LARCENY INCLUDES:					
AUTO BURGLARY OVER \$400	1	1%	3	2%	-1%
AUTO BURGLARY UNDER \$400	11	6%	7	2%	4%
THEFT OVER \$400	26	9%	17	7%	2%
THEFT UNDER \$400	227	40%	315	42%	-3%

RATES AND ARRESTS	2010	2009	CHANGE
CLEARANCE RATE			
VIOLENT CRIME	55%	61%	-5%
PROPERTY CRIME	21%	21%	0%
CLEARANCE RATE TOTAL	25%	25%	0%

ARRESTS			
ADULT FELONY	547	559	-2%
ADULT MISDEMEANOR	1,844	1,724	7%
ADULT TOTAL	2,391	2,280	5%

JUVENILE FELONY	70	83	-16%
JUVENILE MISDEMEANOR	208	227	-8%
JUVENILE TOTAL	278	310	-10%

ARRESTS GRAND TOTAL	2,669	2,590	3%
----------------------------	--------------	--------------	-----------

ARREST RATE			
FELONY	8.25	8.59	-4%
MISDEMEANOR	27.45	26.10	5%
ADULT RATE TOTAL	35.70	34.64	3%

ANNUAL STATISTICS — CONTINUED

TRAFFIC — FIVE YEARS YTD THROUGH DECEMBER

VIOLATION	2010	2009	2008	2007	2006	5-YEAR AVERAGE
SPEEDING	650	1,031	1,115	961	1,237	999
FOLLOWING TO CLOSE	11	26	19	37	40	27
STARTING, BACKING, UNSAFELY	14	24	15	16	26	19
STOP SIGN-DISREGARD	912	1,412	903	1,060	1,520	1,161
REGULATORY SIGN-DISREGARD	1,019	594	508	482	598	640
SIGNAL — DISREGARD	894	965	762	907	1,162	938
ROADWAY — FAILURE TO DRIVE ON RIGHT	99	177	114	121	129	128
TURNING UNSAFELY OR IMPROPERLY	134	113	82	135	214	136
FAILURE TO YIELD AT INTERSECTION	117	130	91	133	150	124
FAILURE TO YIELD NOT AT INTERSECTION	38	35	34	50	56	43
PASSING — UNSAFELY OR IMPROPERLY	5	16	11	19	11	12
OTHER MOVING VIOLATIONS	859	730	834	574	713	742
TOTAL — MOVING VIOLATIONS	4,752	5,253	4,488	4,495	5,856	4,969
EQUIPMENT — UNSAFE	1,989	2,281	1,725	1,917	1,575	1,897
CHILD RESTRAINT VIOLATION	18	25	17	17	14	18
SEAT BELT VIOLATION	496	394	416	648	710	533
WIRELESS DEVICE VIOLATION	2,467	2,190	388	0	0	1,009
VEHICLE REGISTRATION	1,691	2,021	1,389	1,666	1,762	1,706
DRIVERS LICENSE VIOLATION	1,106	1,503	1,018	959	1,061	1,129
FINANCIAL RESPONSIBILITY	1,228	1,480	976	998	1,829	1,302
TOTAL — NONMOVING VIOLATIONS	8,995	9,894	5,929	6,205	6,951	7,595
BICYCLE VIOLATION	42	13	9	8	11	17
PEDESTRIAN VIOLATION	12	20	32	10	14	18
TOTAL — PEDESTRIAN/BICYCLE VIOLATIONS	54	33	41	18	25	34
PARKING — UNSAFE OR IMPROPER	4,755	4,320	3,780	3,257	2,763	3,775
PARKING — TIME LIMIT	2,199	1,420	4,281	2,499	2,083	2,496
TOTAL PARKING VIOLATIONS	6,954	5,740	8,061	5,756	4,846	6,271
TOTAL VIOLATIONS	20,755	20,920	18,519	16,474	17,678	18,869

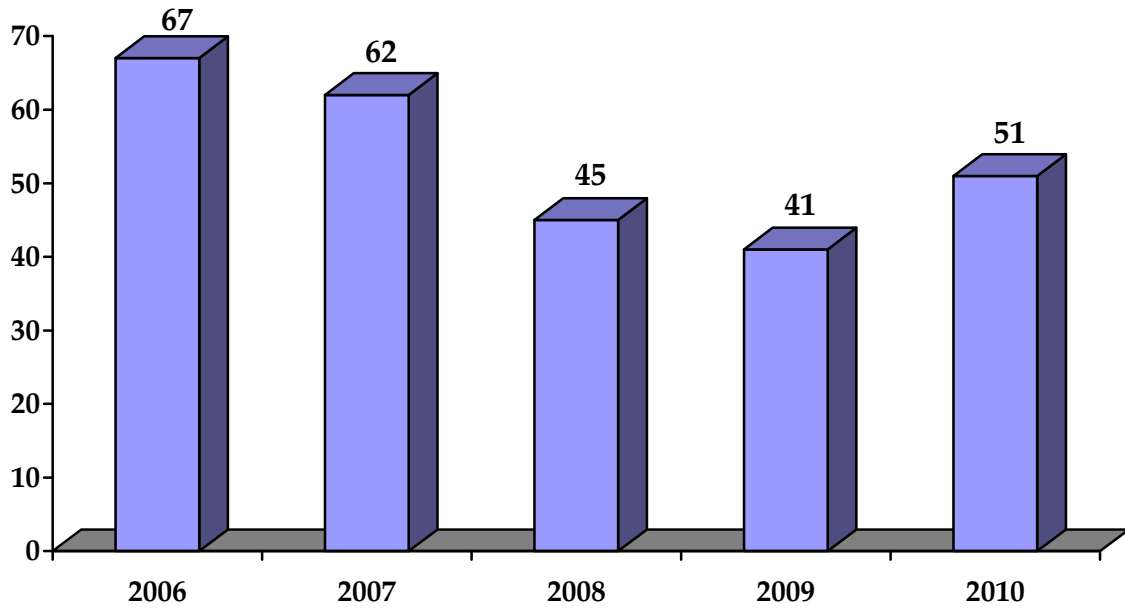
COLLISIONS						
FATAL ACCIDENTS [NO. FATALITIES = 3]	3	0	0	1	1	1
INJURY ACCIDENTS	196	203	221	215	258	219
PROPERTY DAMAGE REPORTS [PATROL RESPONSE]	181	326	385	532	551	395
CITIZEN (COUNTER) REPORTS	146	162	148	118	163	147
PRIVATE PROPERTY ACCIDENTS	46	59	82	103	97	77
TOTAL ACCIDENTS	572	750	836	969	1,070	839

ANNUAL STATISTICS — CONTINUED

GANG-RELATED CASES — FIVE-YEAR COMPARISON

	2006	2007	2008	2009	2010
TOTAL CASES	67	62	45	41	51
% CHANGE FROM PRIOR YEAR	-6%	-7%	-27%	-9%	25%

GANG-RELATED CASES — HISTORICAL OVERVIEW



ANNUAL STATISTICS — CONTINUED

GLOSSARY AND CALCULATIONS

Population	Based on data from the State of California Department of Finance Demographic Research Unit. (http://www.dof.ca.gov/research/demographic/ .) The population basis for 2010: 74,762.
Crime Rate	A crime rate describes the number of crimes reported per total population. The State calculates the rate per 100,000 population. Mountain View Police Department calculates the rate based on 1,000 population. A crime rate is calculated by dividing the number of reported crimes by the total population; the result is multiplied by 1,000. For example, if there were 78 robberies in Mountain View and the population was 73,000, this equals a robbery crime rate of 1.07 per 1,000 general population. When comparing the Mountain View Police Department rate to the State rate, multiply the Mountain View Police Department rate by 100. This equals a robbery crime rate of 106.8 per 100,000 general population. Note that this is an inflated rate based on actual population.
Violent Crime Index	The Violent Crimes Index includes Criminal Homicide, Forcible Rape, Aggravated Assault and Robbery.
Property Crime Index	The Property Crime Index includes Burglary, Larceny over \$400 and Motor Vehicle Theft.
Clearance Rate	A clearance rate is the percentage of crimes reported that have been cleared. A clearance rate is calculated by dividing the number of crimes cleared by the number of crimes reported; the result is multiplied by 100. For example, if there were 35 robberies cleared and 78 robberies reported, this equals a robbery clearance rate of 44.9 percent.
Arrest Rate	An arrest rate describes the number of arrests made by law enforcement agencies per 1,000 total population. An arrest rate is calculated by dividing the number of reported arrests by the respective population; the result is multiplied by 1,000. For example, if there were 2,500 total felony arrests and the total population was 73,000, the arrest rate is 34.25. The State factors the rate based on 100,000 population. To compare the Mountain View Police Department rate to the State, multiply the Mountain View Police Department rate by 100. Note that this is an inflated rate from the actual rate per population. Mountain View Police Department does not calculate the arrest rate for the population at-risk (ages 10 to 69).