

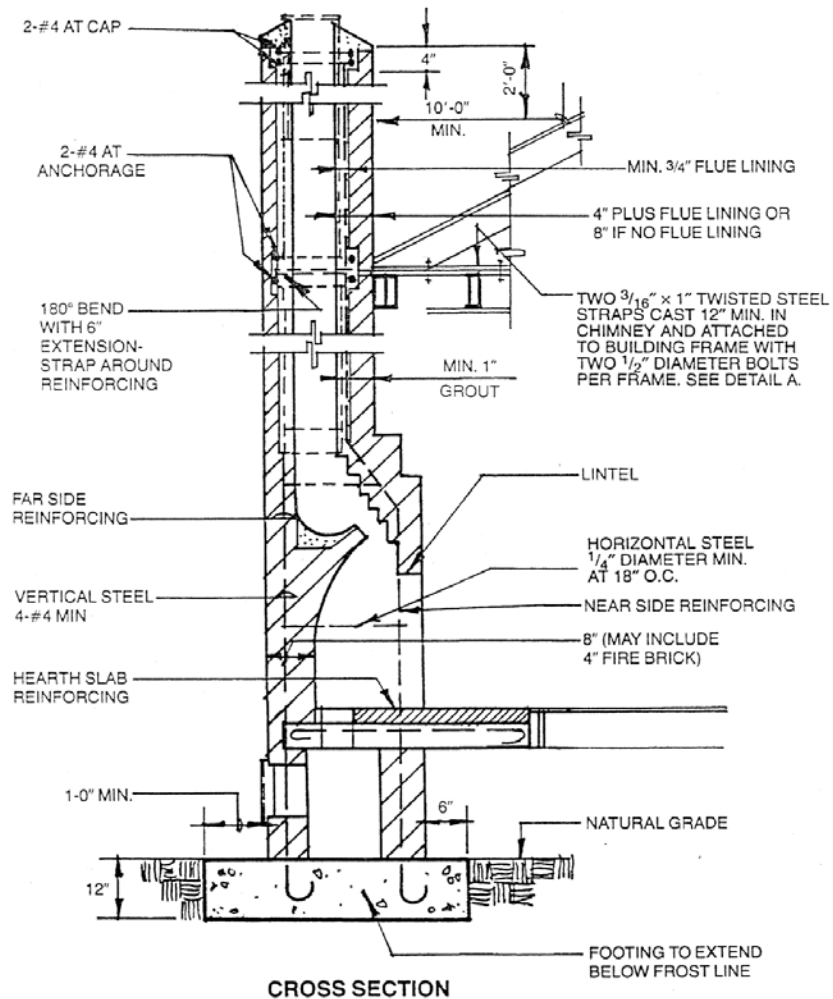


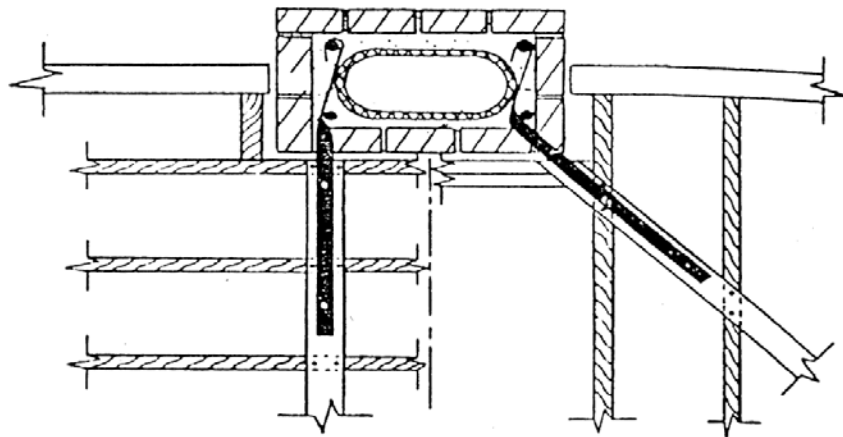
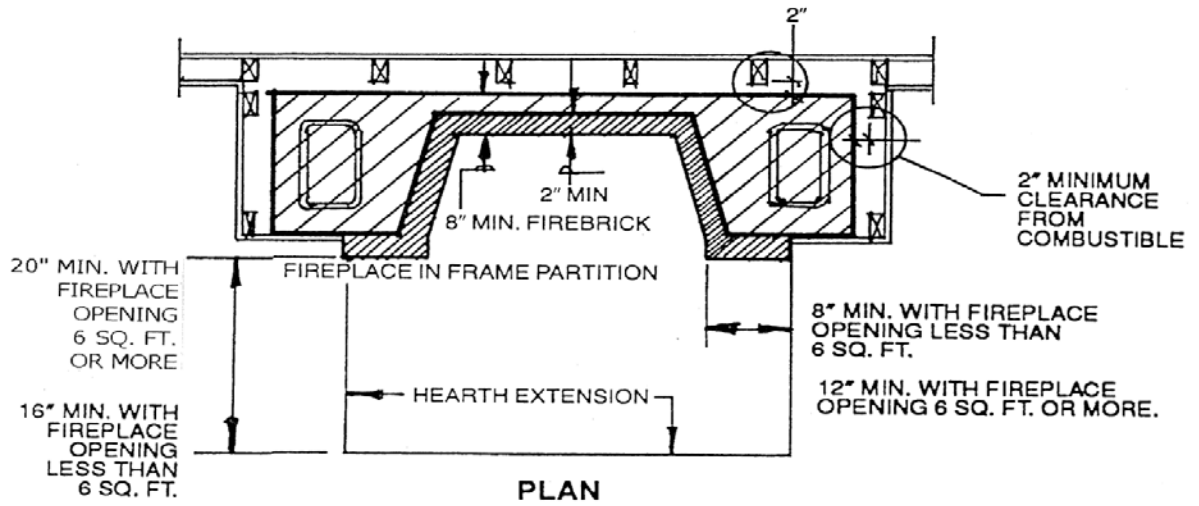
COMMUNITY DEVELOPMENT DEPARTMENT • BUILDING INSPECTION DIVISION
500 Castro Street • Post Office Box 7540 • Mountain View, California 94039-7540
650-903-6313 • FAX 650-962-8501

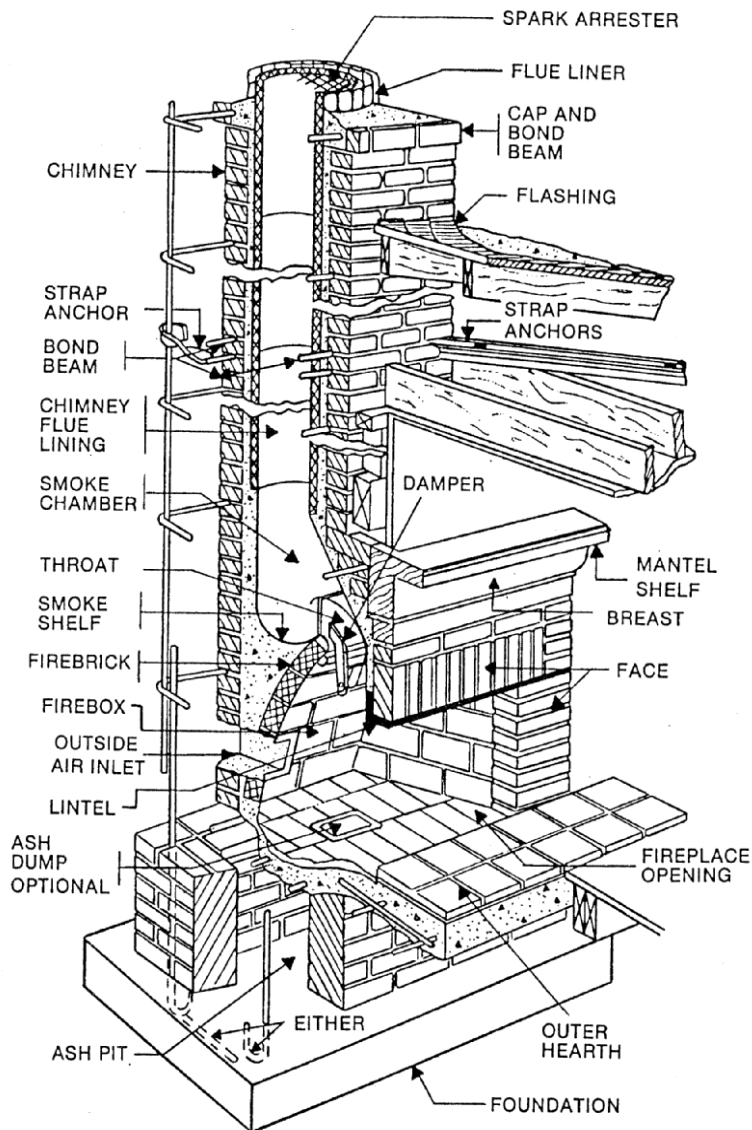
STANDARD MASONRY CHIMNEY AND FIREPLACE

The City of Mountain View requires a building permit for any construction, repair or alteration of a masonry chimney or fireplace. The requirements of Chapter 21, Section 2111 of the 2013 California Building Code shall be applicable.

Per Mountain View Civil Code Chapter 8, Division IV. Wood-Burning Appliances, the City of Mountain View does not allow new wood-burning appliance or relocation of existing wood-burning appliance. See Mountain View City Code Section 8.25.6 for exemptions or contact the Building Staff at (650) 903-6313.







PARTS OF A FIREPLACE AND CHIMNEY

