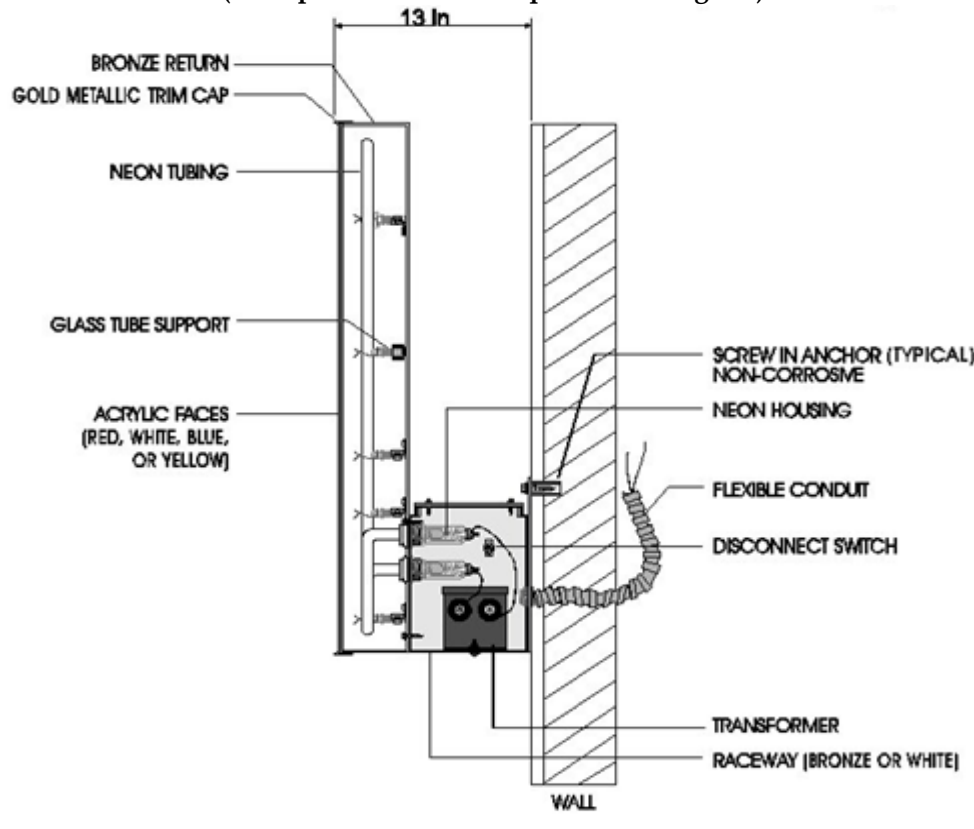




## CHANNEL LETTER DETAIL

(Example of submittal requirement diagram)



### 2013 California Electrical Code - Article 600

#### Typical Sign Specifications (Sample description below):

1. Custom fabricated sheet metal construction sealed to eliminate light leaks. Interior to have white reflective finish, exterior to be automotive enamel over primer undercoat, colors as per approved plan.
2. Acrylic plastic face with trim cap edge.
3. Neon gas interior illumination system.
4. Conduit system with flex crossovers between letters and transformer boxes.
5. Product is UL LISTED
6. Minimum  $\frac{1}{4} \times 1 \frac{1}{2}$  Nylon anchors (or) #10 x  $1 \frac{1}{2}$  lag bolts. Number of anchors to be determined by designer.
7. Access for installation in front of and behind wall must be available at time of inspection.